



CleanAir Solutions, Inc.
The Cleanroom Specialists

**Engineered to be modular -
When your needs expand, so does the
cleanroom!**

CAS-797 with ACT!

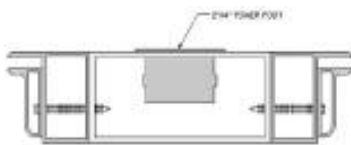
Isolation and environmental control has taken a huge step forward for the medical device and pharmaceutical industries, thanks to the latest innovation from CleanAir Solutions, Inc.

The CAS-797 Enclosure System with ACT (Active Channel Technology) allows you to adjust the insert channel of the SIS frame for different sizes of solid inserts from 1/8" to 3/8".

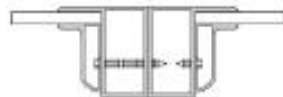


- Can be fitted for wall panel inserts of ABS, polycarbonate, aluminum composite, acrylic, tempered glass or other materials.
- Easy-to-clean features are ideal for USP <797> applications for pharmaceutical compounding and medical device manufacturing, assembly and packaging applications.
- Suitable for ISO Class 8 (Class 100,000) applications to Class 4 (Class 10).
- Order the CAS-797 modular cleanroom with the integrated ceiling system in factory assembled modules for fast and simple construction.
- All assembly hardware is accessed from the outside and sealed for a professional look.
- Can be designed as a single-pass cleanroom, or as a re-circulating design with air-chase walls and ceiling plenum.

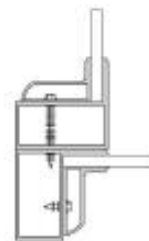
The insert that is flush with the frame, making the assembled wall easy to keep clean!



Ceiling support post connection
with electrical



Wall-to wall-connection



Wall-to-wall
corner connection



Active Channel Technology is a two-piece frame that allows the end user to vary the thickness of the insert material from 1/8" to 3/8". Use a wide variety of insert materials including ABS, polycarbonate, aluminum composite, acrylic, or even tempered glass.