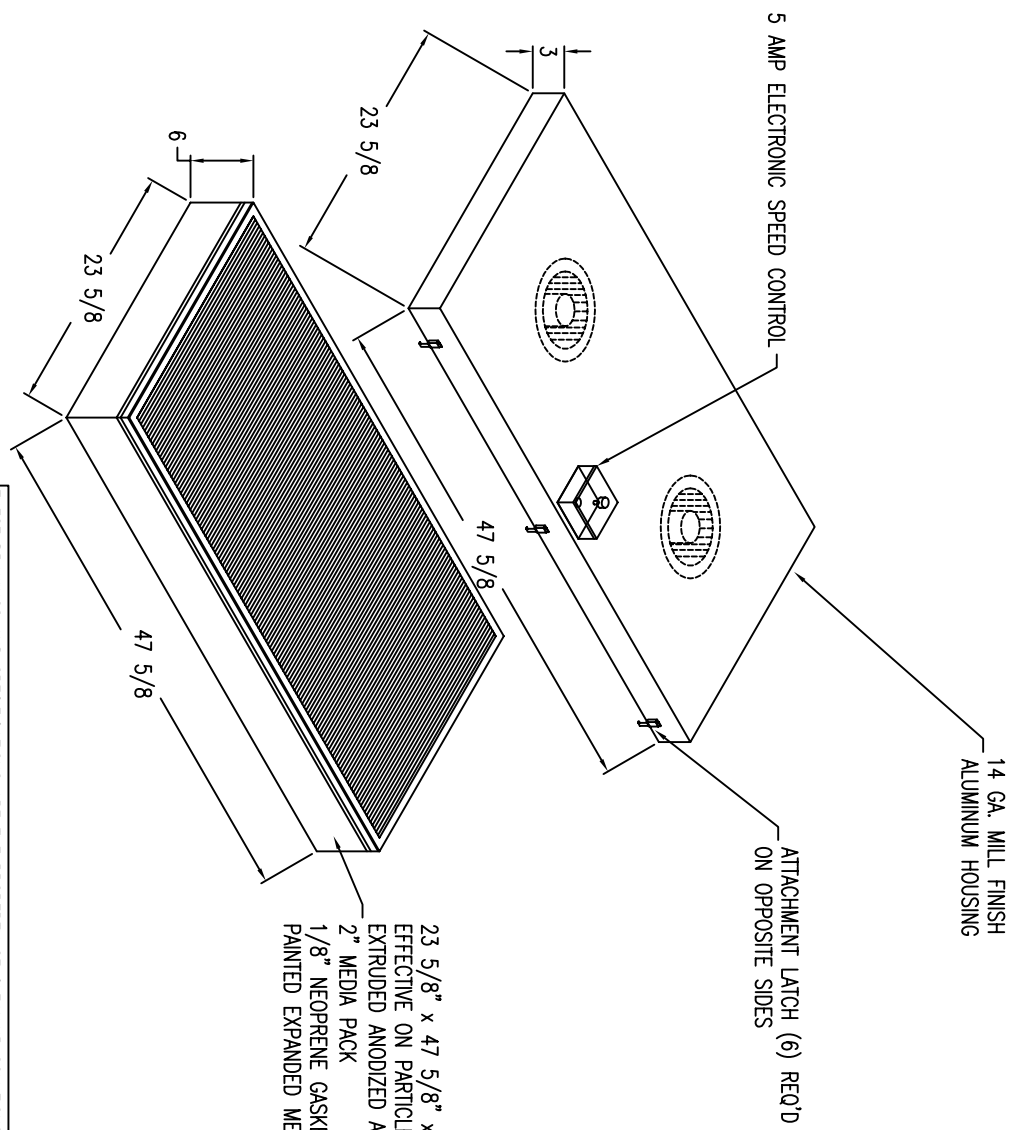


NOTES:

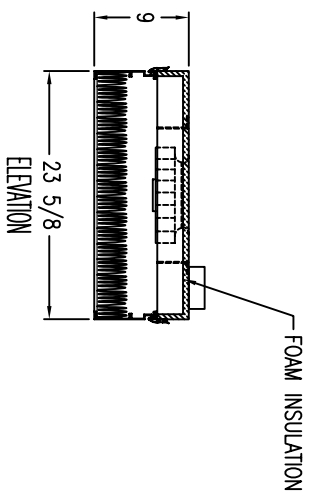
- CUSTOMER TO SUPPLY 120 VOLT/60 CYCLE/ 2.0 FLA
- RATING 600 CFM MAX.
- SOUND LEVEL 65 DBA @ 90 FPM



ATTACHMENT LATCH (6) REQ'D ON OPPOSITE SIDES

14 GA. MILL FINISH ALUMINUM HOUSING

23 5/8" x 47 5/8" x 6" HEPA FILTER 99.99% EFFECTIVE ON PARTICLES OF 0.3 MICRONS OR LARGER. EXTRUDED ANODIZED ALUMINUM FRAME
 2" MEDIA PACK
 1/8" NEOPRENE GASKET SEAL UPSTREAM
 PAINTED EXPANDED METAL FACEPLATE DOWNSTREAM



FOAM INSULATION

| REV. | DESCRIPTION | DATE |
|------|-------------|------|
| | | |

THESE DRAWINGS AND SPECIFICATIONS ARE THE PROPERTY OF CLEANAIR SOLUTIONS. THEIR USE BY OTHERS, EXCEPT BY AGREEMENT, IS EXPRESSLY PROHIBITED.

| | | |
|---|------------------|---|
| DRAWN BY: MM | DATE: 4/11/00 |  <p>Cleanair Solutions, Inc.</p> <p>828 BARRIDGE PLACE FAIRFIELD, CA 94534 PHONE: 707-864-9499 FAX: 707-864-9399</p> |
| APPROVED BY: | | |
| UNLESS OTHERWISE SPECIFIED: DIMENSIONS IN INCHES | | ASSEMBLY DRAWING FOR MODEL LP24-AC HEPA FAN FILTER UNIT |
| SHEET: 0F | REV: | |
| SCALE: 1"=1' | | CUSTOMER: JOB NO. S/N: DWG. NO.: LP02A004 |