

Teardrop Light Fixture

Air Foil Design

Clean Rooms International's Teardrop Light Fixture features a narrow, airfoil design which minimizes turbulence in cleanrooms requiring an unidirectional air flow. The fixture is suitable for use in Federal Standard 209 Class 100 to 100,000 and ISO Class 5 to 9 cleanroom environments.

Applications include but not limited to cleanrooms, technical and biomedical labs, food processing centers and pharmaceutical labs.

Smooth Environmental Side

A one-piece, clear extruded, prismatic acrylic lens with internal horizontal prism pattern maintains a smooth environmental side. White, closed cell gasketing seals the lens to end caps and prevents entrapment of biohazardous contaminants which could grow inside the fixture.

The enclosed 2" wide gasketed housing can be mounted on any 2" T-Bar. Four recessed, 7/8" diameter knockouts-one on each end cap and one at each end of the mounting surface-allow connection of vapor tight conduit fitting for either continuous row mounting or top access.

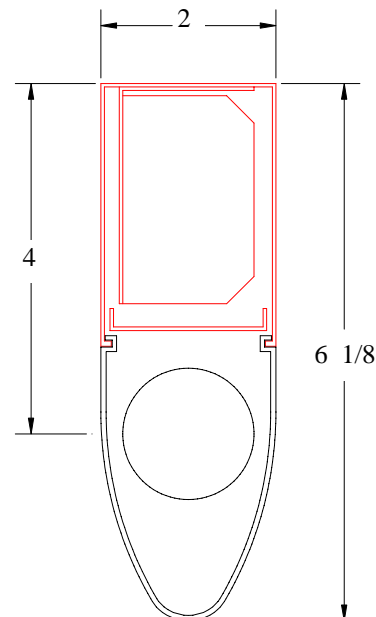
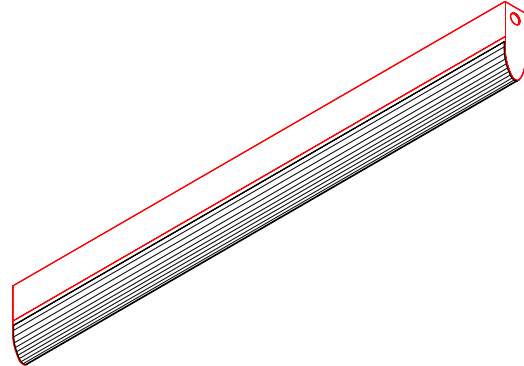
Sealed End Caps

Housings are die-formed, 22 ga. CRS with 16 ga., spot welded and sealed end caps. Standard white high reflectance polyester powder coat finish. Gloss: 85%; Reflectance: 93%; Hardness: 2H; Salt Spray: 500 Hours.

A standard 4' fixture is equipped with a T8 electronic ballast and receptacles to accept one F32 T8 fluorescent lamp tube (lamp tube not included).

Regulatory Compliance

These luminaries are UL listed and CSA certified for wet locations and are manufactured in accordance with USDA, FDA, and NSF guidelines. All fixtures have been tested and reported in compliance with Federal Standard 209.



- **Manufactured in compliance with USDA, FDA, and NSF guidelines.**
- **UL Listed.**
- **Suitable for use in VERTICAL LAMINAR AIR FLOW clean rooms.**

4' Teardrop Light Fixture

Mounting Data

Illustration A shows the power connection thru the top of the fixture and the T-Bar. A hole must be drilled in the T-Bar for allowing the wires to pass thru. Knockouts are located on each end of the top surface for allowing power connections. The fixture is secured to the T-Bar thru the holes located on the top of the fixture as shown in Illustration B.

Illustration B is same as A but with expanded view of the fixture.

Illustration C is an expanded view showing the power connection at the side of the fixture. Knockouts are provided on each end cap for allowing power connections. The fixture is secured to the T-Bar thru holes located on the top of the fixture as shown. The method is suitable for continuous row mounting.

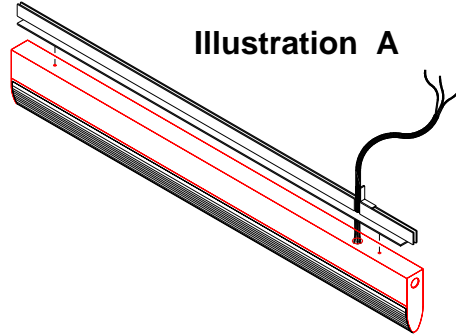


Illustration A

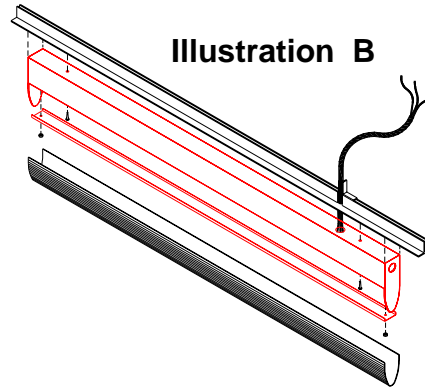


Illustration B

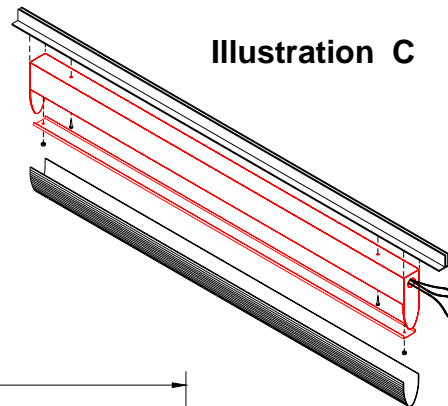
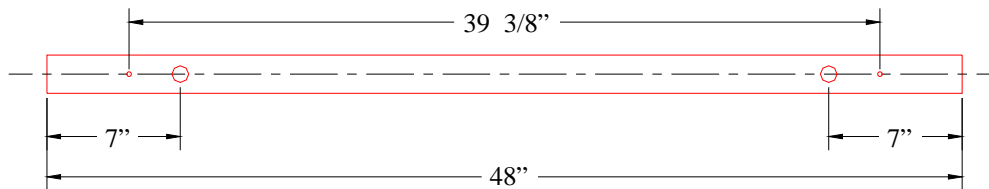


Illustration C

Illustration D - Mounting Diagram



Ordering Information

Part No.	Nominal	Voltage	Cycle	Ballast	Amps	Watts	Weight
148054	1' x 4'	120V	60 hz	T8 Electronic	.28	32	12 lbs. (5.5 kg.)
148055	1' x 4'	277V	60 hz	T8 Electronic	.14	32	12 lbs. (5.5 kg.)
148206	Replacement Teardrop Lens						